

WHELEN[®]

ENGINEERING COMPANY INC.

Route 145, Winthrop Road,
Chester, Connecticut 06412
Phone: (860) 526-9504
Fax: (860) 526-4078
Internet: www.whelen.com
Sales e-mail: autosale@whelen.com
Canadian Sales e-mail: autocan@whelen.com
Customer Service e-mail: custserv@whelen.com

Installation Guide: 700-series Super-LED[®] Lighthouse

Safety First

This document provides all the necessary information to allow your Whelen product to be properly and safely installed. Before beginning the installation and/or operation of your new product, the installation technician and operator must read this manual completely. Important information is contained herein that could prevent serious injury or damage.

- **Proper installation of this product requires the installer to have a good understanding of automotive electronics, systems and procedures.**
- **If mounting this product requires drilling holes, the installer MUST be sure that no vehicle components or other vital parts could be damaged by the drilling process. Check both sides of the mounting surface before drilling begins. Also de-burr any holes and remove any metal shards or remnants. Install grommets into all wire passage holes.**
- **If this manual states that this product may be mounted with tape or Velcro[™], clean the mounting surface with a 50/50 mix of isopropyl alcohol and water and dry thoroughly.**
- **Do not install this product or route any wires in the deployment area of your air bag. Equipment mounted or located in the air bag deployment area will damage or reduce the effectiveness of the air bag, or become a projectile that could cause serious personal injury or death. Refer to your vehicle owners manual for the air bag deployment area. The User/Installer assumes full responsibility to determine proper mounting location, based on providing ultimate safety to all passengers inside the vehicle.**
- **For this product to operate at optimum efficiency, a good electrical connection to chassis ground must be made. The recommended procedure requires the product ground wire to be connected directly to the NEGATIVE (-) battery post.**
- **If this product uses a remote device to activate or control this product, make sure that this control is located in an area that allows both the vehicle and the control to be operated safely in any driving condition.**
- **Do not attempt to activate or control this device in a hazardous driving situation.**
- **This product contains either strobe light(s), halogen light(s), high-intensity LEDs or a combination of these lights. Do not stare directly into these lights. Momentary blindness and/or eye damage could result.**
- **Use only soap and water to clean the outer lens. Use of other chemicals could result in premature lens cracking (crazing) and discoloration. Lenses in this condition have significantly reduced effectiveness and should be replaced immediately. Inspect and operate this product regularly to confirm its proper operation and mounting condition. Do not use a pressure washer to clean this product.**
- **It is recommended that these instructions be stored in a safe place and referred to when performing maintenance and/or reinstallation of this product.**
- **FAILURE TO FOLLOW THESE SAFETY PRECAUTIONS AND INSTRUCTIONS COULD RESULT IN DAMAGE TO THE PRODUCT OR VEHICLE AND/OR SERIOUS INJURY TO YOU AND YOUR PASSENGERS!**

For warranty information regarding this product, visit www.whelen.com/warranty

Installation:

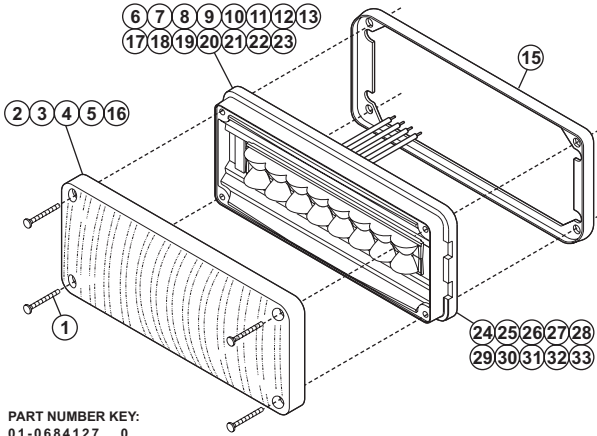
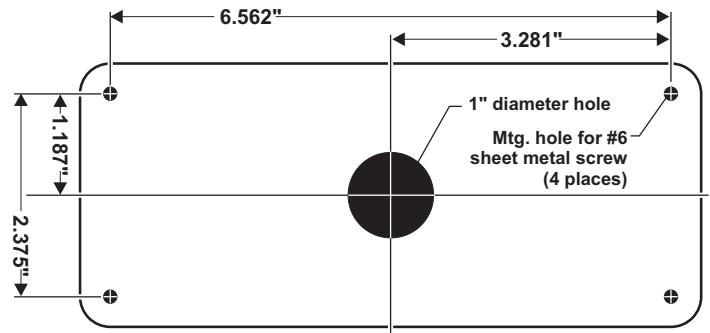
WARNING! The LED models designated "external flasher" must be connected to an electronic flasher. Allowing the LED to steady burn will damage the lighthouse and void the warranty.

External Flasher Models: This product draws significantly less current than a standard incandescent automotive bulb. If your flasher does not operate properly, it may be necessary to replace your existing flasher module with a Whelen 3TERM flasher module. Contact your sales representative for specific vehicle application.

Note: Make sure lighthouse will not interfere with existing equipment or any items on the opposite side of the mounting surface.

- Follow the dimensions shown. On the mounting surface, mark off and drill four mounting holes for a #6 sheet metal screw and a 1 inch wire passage hole in the center. Always check all measurements before drilling.
- Using appropriately sized wires (Minimum wire size / 18 AWG), extend the lighthouse wires to their connections. Fuse the +12VDC connections at 3 Amps

and test operation of lighthouse, then position the lighthouse onto the mounting surface and secure it using the four supplied #6 x 1-1/2" sheet metal screws.



PART NUMBER KEY:
01-0684127

CONNECTOR
LED & LENS COLOR
FLASHER REQUIREMENT & VOLTAGE

FLASHER REQUIREMENT & VOLTAGE	LED - LENS COLOR	2 = BLUE-CLEAR	F = AMBER/WHITE-CLEAR
2 = EXTERNAL / 12V	A = AMBER-AMBER	3 = WHITE-CLEAR	J = BLUE/RED-CLEAR
4 = ON BOARD / 12V	B = BLUE-BLUE	4 = GREEN-CLEAR	K = AMBER/RED-CLEAR
1 = EXTERNAL / 24V	G = GREEN-GREEN	5 = RED-CLEAR	M = AMBER/BLUE-CLEAR
3 = ON BOARD / 24V	R = RED-RED	D = WHITE/RED-CLEAR	CONNECTOR
	1 = AMBER-CLEAR	E = BLUE/WHITE-CLEAR	0 = NO CONNECTOR

Wire Functions / On-Board Flasher / 12V
LED Color Power
BLACK Ground
VIOLET HI/LO Power
WHITE/VIOLET Scan-Lock™

Wire Functions / External Flasher / 12V
LED Color Power
BLACK Ground

Wire Functions / External Flasher / 24V
LED Color Power
BLACK/WHITE Ground

Wire Functions / On-Board Flasher / 24V
LED Color Power
BLACK / WHITE Ground
VIOLET HI/LO Power
WHITE / VIOLET Scan-Lock™

Wire Functions / Split / On-Board Flasher / 12V
LED Color Power 1
WHITE / LED Color Power 2
BLACK Ground
WHITE / VIOLET Scan-Lock™

Wire Functions / Split / External Flasher / 12V
LED Color Power 1
WHITE / LED Color Power 2
BLACK Ground 1
WHITE / BLACK Ground 2

QTY	QTY	QTY	QTY	QTY	QTY	ITEM	PART NUMBER	DESCRIPTION
				*			01-06841272*0	700 LINEAR - EXTERNAL FLASHER
				*			01-06841274*0	700 LINEAR - ON-BOARD FLASHER
			*				01-06841271*0	700 LINEAR 24V - EXTERNAL FLASHER
			*				01-06841273*0	700 LINEAR 24V - ON-BOARD FLASHER
			*				01-06841272*1	700 LINEAR - EXTERNAL FLASHER (DEUTSCH)
			*				01-06841274*1	700 LINEAR - ON-BOARD FLASHER (DEUTSCH)
4	4	4	4	4	4	1	15-061416-240	SCREW / #6 X 1-1/2" PPHSMS
A/R	A/R	A/R	A/R	A/R	A/R	2	68-1183582-1S	LENS / OPTIC / AMBER
A/R	A/R	A/R	A/R	A/R	A/R	3	68-1183582-2S	LENS / OPTIC / BLUE
A/R	A/R	A/R	A/R	A/R	A/R	4	68-1183582-3S	LENS / OPTIC / CLEAR
A/R	A/R	A/R	A/R	A/R	A/R	5	68-1183582-5S	LENS / OPTIC / RED
-	-	-	-	-	A/R	6	02-0363888210	SUB ASSY / 700 LINEAR / AMBER / 2 WIRE
-	-	-	-	-	A/R	7	02-0363888220	SUB ASSY / 700 LINEAR / BLUE / 2 WIRE
-	-	-	-	-	A/R	8	02-0363888230	SUB ASSY / 700 LINEAR / WHITE / 2 WIRE
-	-	-	-	-	A/R	9	02-0363888250	SUB ASSY / 700 LINEAR / RED / 2 WIRE
-	-	-	-	A/R	-	10	02-0363888410	SUB ASSY / 700 LINEAR / AMBER / 4 WIRE
-	-	-	-	A/R	-	11	02-0363888420	SUB ASSY / 700 LINEAR / BLUE / 4 WIRE
-	-	-	-	A/R	-	12	02-0363888430	SUB ASSY / 700 LINEAR / WHITE / 4 WIRE
-	-	-	-	A/R	-	13	02-0363888450	SUB ASSY / 700 LINEAR / RED / 4 WIRE
1	1	1	1	1	1	14	10-0523112	LABEL (Not Shown)
1	1	1	1	1	1	15	38-0463342-00	GASKET
-	A/R	A/R	A/R	-	A/R	16	68-1183582-4S	LENS / OPTIC / GREEN
A/R	-	A/R	A/R	-	A/R	17	02-0363888240	700 LINEAR / GREEN / 2 WIRE
-	-	-	-	A/R	-	18	02-03638884D0	700 LINEAR / WHITE / RED SPLIT
-	-	-	-	A/R	-	19	02-03638884E0	700 LINEAR / BLUE / WHITE SPLIT
-	-	-	-	A/R	-	20	02-03638884F0	700 LINEAR / AMB/WHT SPLIT
-	-	-	-	A/R	-	21	02-03638884J0	700 LINEAR / BLUE / RED SPLIT
-	-	-	-	A/R	-	22	02-03638884K0	700 LINEAR / AMBER / RED SPLIT
-	-	-	-	A/R	-	23	02-03638884M0	700 LINEAR / AMBER / BLUE SPLIT
-	-	-	A/R	-	-	24	02-0363888110	700 LINEAR 24V / AMBER / 2 WIRE
-	-	-	A/R	-	-	25	02-0363888120	700 LINEAR 24V / BLUE / 2 WIRE
-	-	-	A/R	-	-	26	02-0363888130	700 LINEAR 24V / WHITE / 2 WIRE
-	-	-	A/R	-	-	27	02-0363888140	700 LINEAR 24V / GREEN / 2 WIRE
-	-	-	A/R	-	-	28	02-0363888150	700 LINEAR 24V / RED / 2 WIRE
-	-	A/R	-	-	-	29	02-0363888310	700 LINEAR 24V / AMBER / 4 WIRE
-	-	A/R	-	-	-	30	02-0363888320	700 LINEAR 24V / BLUE / 4 WIRE
-	-	A/R	-	-	-	31	02-0363888330	700 LINEAR 24V / WHITE / 4 WIRE
-	-	A/R	-	-	-	32	02-0363888340	700 LINEAR 24V / GREEN / 4 WIRE
-	-	A/R	-	-	-	33	02-0363888350	700 LINEAR 24V / RED / 4 WIRE
-	A/R	-	-	-	-	34	02-03638882*4	700 LINEAR / 2 WIRE / SPLIT / DEUTSCH
A/R	-	-	-	-	-	35	02-03638884*5	700 LINEAR / 4 WIRE / SPLIT / DEUTSCH

Flasher Models:

Scan-Lock™: White-Violet Wire / This feature allows the user to select from several available flash patterns.

TO CYCLE THROUGH ALL PATTERNS: Apply positive voltage to the WHITE-VIOLET wire for less than 1 second and release to cycle forward. Apply positive voltage to the WHITE-VIOLET wire for more than 1 second and release to cycle backward.

TO SET A PATTERN AS DEFAULT: Allow the desired pattern to run for more than 5 seconds. The lighthouse will now display this pattern when active.

TO RESET TO THE FACTORY DEFAULT PATTERN: Turn off power, apply positive voltage to the WHITE-VIOLET wire, then turn power on.

FLASH PATTERNS: SignalAlert™ 75 / SignalAlert™ 150 / SingleFlash 375 / SingleFlash 150 / SingleFlash 75 / DoubleFlash 150 / DoubleFlash 75 / CometFlash® 75 / ActionFlash™ / ModuFlash™ / ComAlert™ / ActionScan™ / SignalAlert™ / Steady / Steady-Brake

FLASH PATTERNS / SPLIT / 4 WIRE: SignalAlert™ 75 - Alt. / SignalAlert™ 75 - Sim. / CometFlash® 75 - Alt. / CometFlash® 75 - Sim. / DoubleFlash 150 - Alt. / DoubleFlash 150 - Sim. / DoubleFlash 75 - Alt. / DoubleFlash 75 - Sim. / SingleFlash 375 - Alt. / SingleFlash 375 - Sim. / SingleFlash 150 - Alt. / SingleFlash 150 - Sim. / SingleFlash 75 - Alt. / SingleFlash 75 - Sim. / ActionFlash™ - Alt. / ActionFlash™ - Sim. / ModuFlash™ - Alt. / ModuFlash™ - Sim. / ActionScan™ / SSNF (CH.1 Flash - CH.2 Steady)

Hi-Lo Intensity: Violet Wire / This feature allows the user to step the unit down to low power operation for nighttime use.

Apply positive voltage to the VIOLET wire to put the lighthouse into low power. Remove the voltage from the VIOLET wire to restore normal high power operation.